



EXPERIENCE **MATTERS**

**2016**

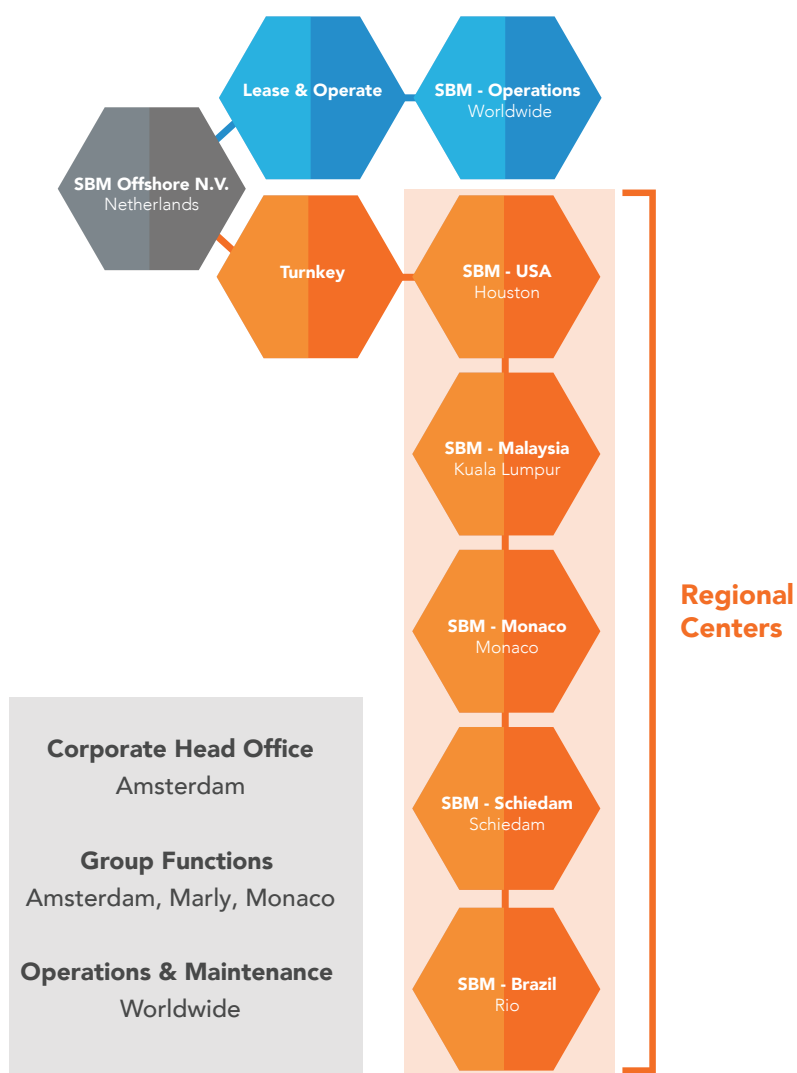
ANNUAL REPORT

## 1.2 ABOUT SBM OFFSHORE AND ITS GLOBAL PRESENCE

SBM Offshore provides floating production solutions to the offshore energy industry, over the

full product life-cycle. The Company is market leading in leased floating production systems with multiple units currently in operation worldwide and has a unique breadth of operational experience in this field.

Company Organization Chart (simplified version)



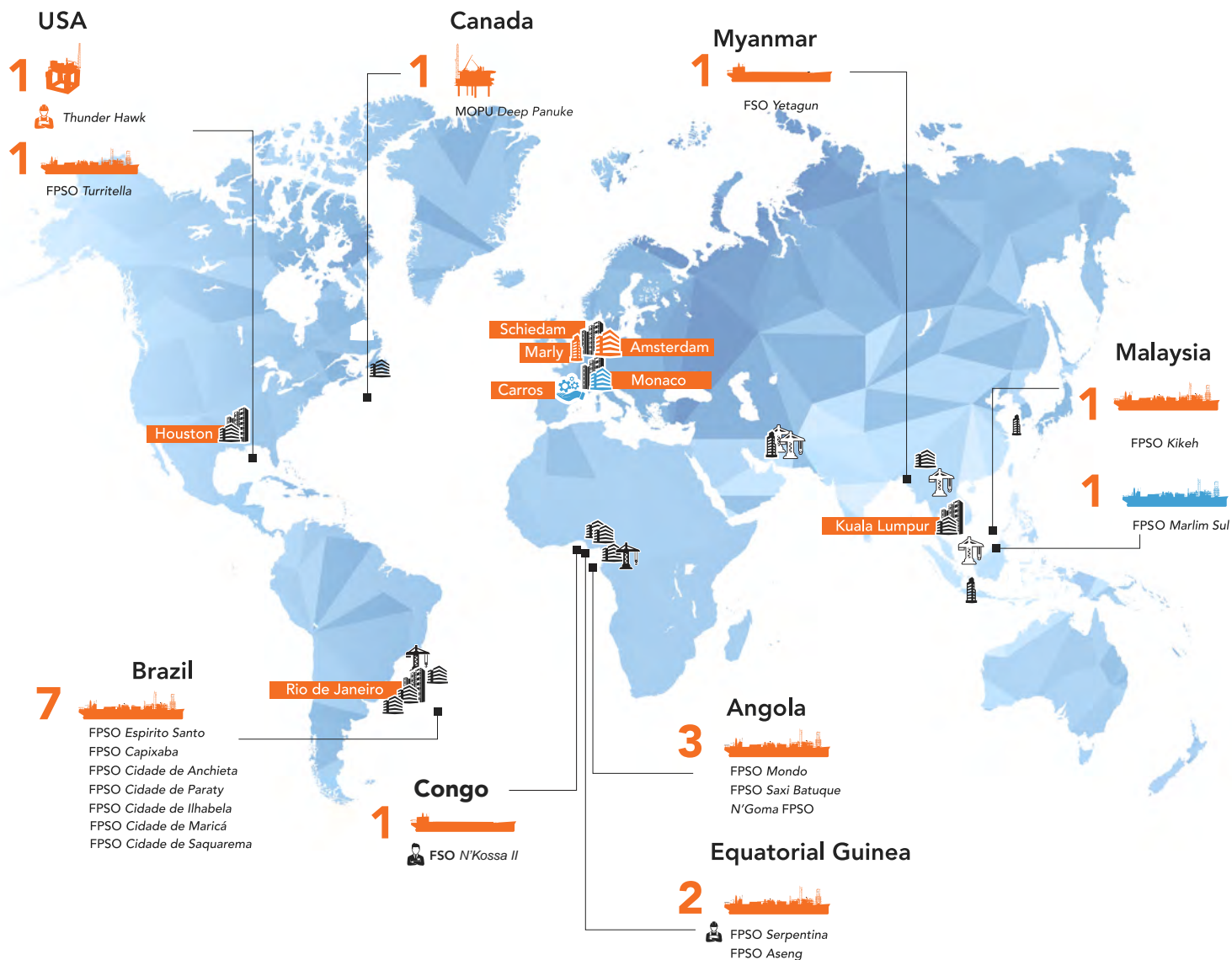
## OWNERSHIP AND OPERATING STRUCTURE

The Company's main activities are the design, supply, installation, operation and life extension of Floating Production, Storage and Offloading (FPSO) vessels. These are either owned and operated by SBM Offshore and leased to its clients or supplied on a turnkey sale basis. Other products include: semi-submersibles, TLPs, FPSO LNGs, turret mooring systems, brownfield, offshore (off)loading terminals and most recently solutions for renewable energy. With an operating fleet of 14 FPSOs, two FSOs, one MOPU and one semi-submersible in operation worldwide at year end and almost 300 years of cumulative FPSO operational experience within the industry, the Company is considered a market leader in providing leased production floating systems.

With its statutory seat in Amsterdam in the Netherlands, SBM Offshore employees total 4,250 and are spread over five regional centers, 10 operational shore bases and the offshore fleet of vessels. Group companies employ over 4,750 people worldwide, which includes 500 working for the joint venture construction yards.



## SBM Offshore Global Presence



Representative Offices  
Dubai, Jakarta, Shanghai



SBM Offshore Head Office



Operations & Maintenance Head Office



Regional Center



Shore bases and Operations Offices



Holding, treasury and support functions



Construction Yard



Site Office



Laboratory



Operated Only



Leased Only



Under Production Handling Agreement



FPSO in Operation



FPSO in Lay-up



FSO in Operation



MOPU Production Field Center



DeepDraftSemi®